

Boardwalk

Embassy Road

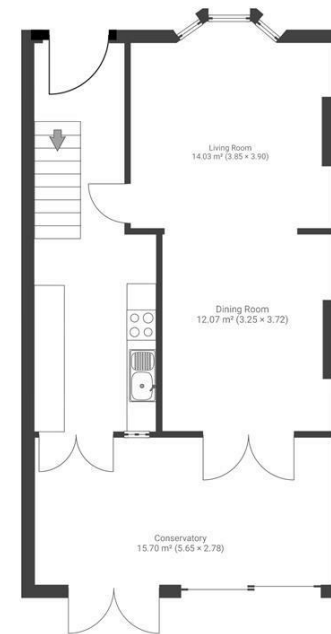
ST GEORGE, BRISTOL

Embassy Road WHITEHALL

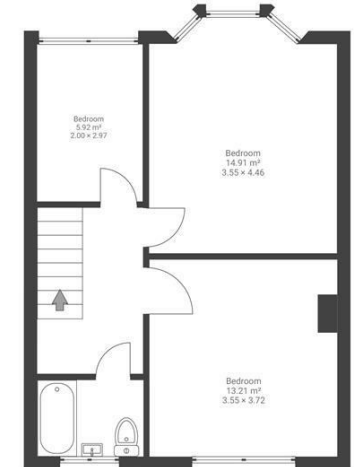
APPROXIMATE FLOOR AREA
110.2 SQM / 1078 SQFT



GROUND FLOOR



FIRST FLOOR



Boardwalk

Embassy Road

ST GEORGE, BRISTOL



£375,000



3 Bedrooms



BS5 7EB



1 Bathrooms

"It's such a lovely, friendly neighbourhood that we have been lucky enough to call home for many years. My favourite part of the home is the garden, it's a real sanctuary away from busy life!"

